

***ROTOPLAT 507***

***ROTOPLAT 707***

TURNTABLE STRETCH WRAPPING MACHINES



**ROBOPAC** 

***ROTOPLAT 507***

***ROTOPLAT 707***

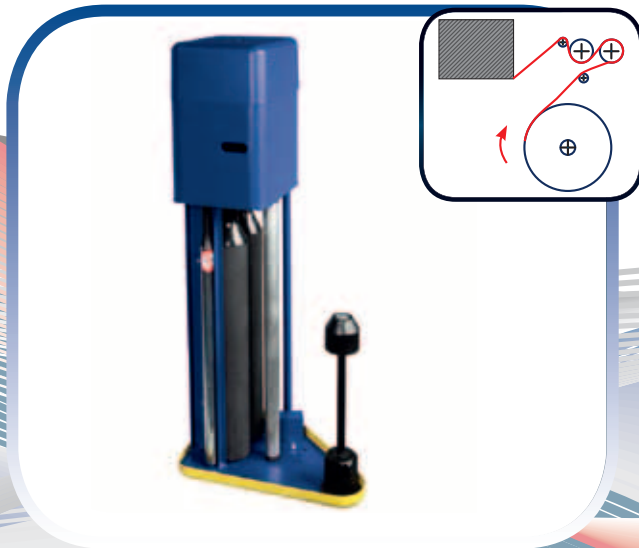
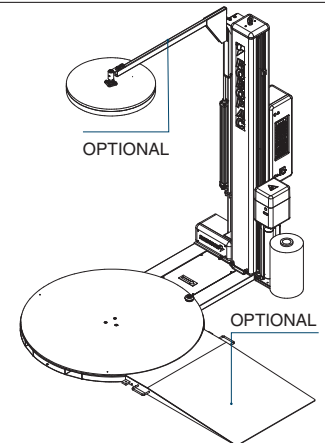
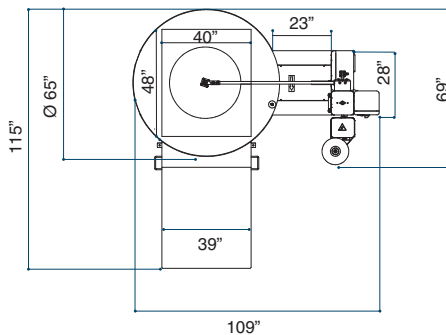
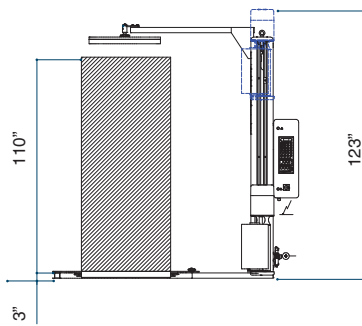
TURNTABLE STRETCH WRAPPING MACHINES



## TECHNICAL FEATURES\*

MACHINE	ROTOPLAT 507	ROTOPLAT 707
Turntable diameter	65" Diamond Plated Standard	65" Diamond Plated Standard
Turntable capacity (lbs)	4400 lbs (optional 5500 lbs.)	4400 lbs (optional 5500 lbs.)
Number of turntable casters	16 Std	16 Std
Max wrapping height STD	110"	110"
Roll carriage type	Power Dual PreStretch (Variable to 250%)	Power Variable PreStretch (variable to 400%)
Front and rear forklifting access	STD	STD
<b>ELECTRICAL REQUIREMENTS</b>		
Power supply VAC	110 V (60 Hz)	110V (60 Hz)
Turntable motor power	1 HP (vac)	1 HP (vac)
Pre-stretch motor power	0.3/0.41 HP	0.3/0.41 HP
Film carriage lift motor	0.3/0.41 HP	0.3/0.41 HP
<b>CONTROL</b>		
Soft start	STD	STD
Adjustable film carriage speed	5.2 - 14.5 ft/min	5.2 - 14.5 ft/min
Load height sensing by photocell	Black Product Photoeye Std	Black Product Photoeye Std
Table rotation speed control	4 - 15 RPM	4 - 15 RPM
4 Programmable Wrapping Menus	Std	Std

ROTOPLAT 507/ 707



### Power Dual PreStretch Roll Carriage

The Power Dual PreStretch System delivers 250% prestretch using fixed gears. You can switch to variable prestretch by activating the Double Stretch "S" Button on the operator panel. The force-to-load is also adjustable from the operator control panel. Robopac's patented, high performance S-Wrap Pattern (with Quick Load System) and load cell anti-tearing device give you Total Film Control.  
 -20" carriage standard  
 -30" carriage optional



### Power Variable PreStretch Roll Carriage

The Power Variable PreStretch System offers you the ability to adjust the prestretch from 100% up to 400% using two independent variable AC motors. Both the PreStretch and the force-to-load are adjustable from operator control panel. Robopac's patented, high performance S-Wrap Pattern (with Quick Load System) and load cell anti-tearing device give you Total Film Control.  
 -20" carriage standard      -30" carriage optional  
 (Power Variable PreStretch is standard on 707 and available on WT and Technoplat machines)

**AETNA GROUP U.S.A. Inc.**

2475B Satellite Blvd. - Duluth - GA 30096-5805 - USA  
phone 678 473 7896 - toll free (866) 713 7286 - fax 678 473 1025  
aetnagroup@aetnagroupusa.com

**ROBOPAC SA**

Strada Rovereta, 27 - 47891 Falciano - Repubblica di San Marino  
tel. (+378) 0549 910511 - fax (+378) 0549 908549/905946  
robopac@aetnagroup.com

**AETNA GROUP SPA - ROBOPAC SISTEMI DIVISION**

S.S. Marecchia, 59 - 47827 Villa Verucchio - Rimini  
tel. (+39) 0541 673411 - fax (+39) 0541 679576  
robopacsistemi@aetnagroup.com

**AETNA GROUP SPA - DIMAC DIVISION**

Via Rinascita, 25 - 40064 Ozzano Emilia - Bologna  
tel. (+39) 051 791611 - fax (+39) 051 6511013  
dimac@aetnagroup.com  
Via Villanova, 305 - 61010 Pietracuta di San Leo - Pesaro Urbino  
tel. (+39) 0541 671131 - fax (+39) 0541 679576

**AETNA GROUP UK LTD**

Packaging Heights  
Highfield Parc - Oakley - Bedford MK43 7TA - England  
tel. (+44) 0 1234 825050 - fax (+44) 0 1234 827070  
sales@aetna.co.uk

**AETNA GROUP FRANCE S.a.r.l.**

4, Avenue de l'Europe - 69150 Décines - France  
tél. (+33) 04 72 14 54 01 - télécopie (+33) 04 72 14 54 19  
commercial@aetnafr.aetnagroup.com

**AETNA GROUP DEUTSCHLAND GmbH**

Liebigstr. 6 - 71229 Leonberg - Höfingen - Germany  
tel. (+49) 0 7152 33 111 30 - fax (+49) 0 7152 33 111 40  
info@aetna-deutschland.de